

This drawing was reproduced from a drawing provided by BERGMANN



**NOTE:**  
 The disturbance shown in the pond area was based on an earlier design.  
 This test boring plan will be updated to show no disturbance in the pond

**TGE**  
 Tierney Geotechnical Engineering  
 3445 Winton Place, Suite 117  
 Rochester, New York 14623  
 (585)424-6360 Ph. (585)424-2318 (Fax)  
 www.tierneygeoeng.com

**PROJECT:**  
 Wal-Mart Expansion, Store N. 2043  
 NYS Route 19  
 Warsaw, New York

**CLIENT:**  
 Bergmann Associates  
 200 First Federal Plaza  
 Rochester, New York 14614

**TEST BORING PLAN**  
 Project No. TGE.08.105  
 Prepared by: MAF  
 Date: 11 November, 2008  
 Scale: See Drawing  
 Figure IIIA-1

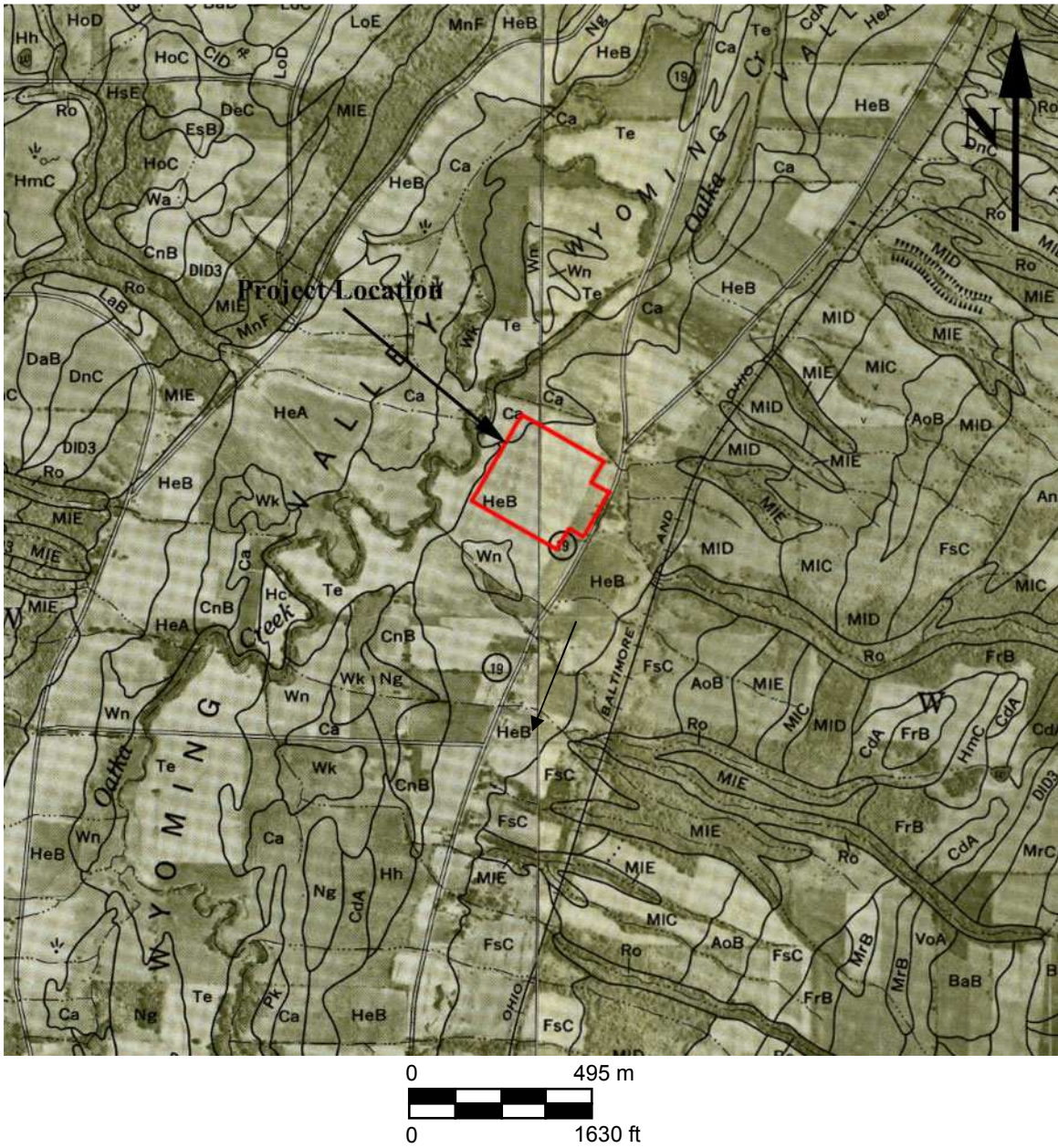


Figure IIIA-2 : Project area on Sheets 16 & 17 of the *Soil Survey of Wyoming County, New York* (USDA 1974)